

# Ion fragmentation of small molecules in mass spectrometry

Jeevan Prasain

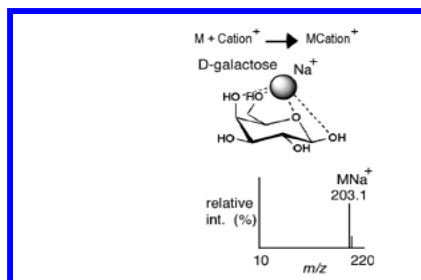
[jprasain@uab.edu](mailto:jprasain@uab.edu)

6-2612

J. Prasain 01/22/2010

## Nomenclature: the main names and acronyms used in mass spectrometry

- **Molecular ion:** Ion formed by addition or the removal of one or several electrons to or from the sample molecules- **Electron Impact (EI-MS)**.  $M + e^- \rightarrow M^{+\bullet} + 2e^-$
- **Adduct ion:** Ion formed through interaction of two species and containing all the atoms of one of them plus one or several atoms of them (e.g. alkali, ammonium).



J. Prasain 01/22/2010

## Contd..

- **Pseudomolecular ion:** Ion originating from the analyte molecule by abstraction of a proton  $[M-H]^-$  or addition of proton  $[M+H]^+$
- **Tandem mass spectrometry (Cooks, 1976): MS/MS (McLafferty, 1978), tandem in space or time**
- **Precursor ion/parent ion:** Ions undergoing fragmentation.
- **Product ion/daughter ion:** Ions resulting from parent/precursor ions.
- **Neutral loss:** Fragments lost as neutral molecules
- **In positive ionization mode**, a trace of formic acid is often added to aid protonation of the sample molecules; in **negative ionization mode** a trace of ammonia solution or a volatile amine is added to aid deprotonation of the sample molecules. Proteins and peptides are usually analysed under positive ionization conditions and polyphenols and acids under negative ionization conditions. In all cases, the  $m/z$  scale must be calibrated.

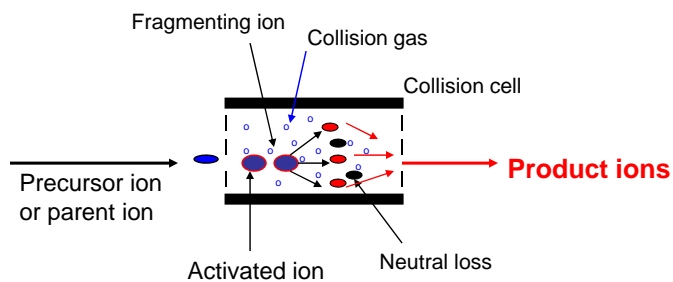
J. Prasain 01/22/2010

## Terminology..

- **Ionspray** denotes pneumatically assisted ESI operating at a flow rate of approximately 5 to 50  $\mu\text{L}/\text{min}$ .
- **Turboionspray** is ionspray with additional heated gas for a flow rate of 0.1 to 2  $\text{ml}/\text{min}$ .
- **Heated nebulizer** is the trade mark of AB Sciex for APCI.

J. Prasain 01/22/2010

## What is Collision Induced Dissociation (CID) or Collisionally Activated Dissociation (CAD) ?



Schematic of CID fragmentation

**Other activation processes:**

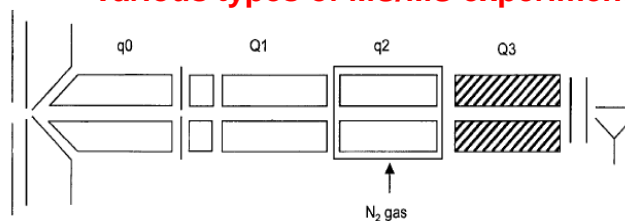
**PSD (post source-decay)**

**ECD (electron capture dissociation)**

**SID (surface-induced dissociation)**

J. Prasain 01/22/2010

## Various types of MS/MS experiments



Mode of operation	Q1	q2	Q3
Q1 Scan	Resolving (Scan)	RF-only	RF-only
Q3 Scan	RF-only	RF-only	Resolving (Scan)
Product Ion Scan (PI)	Resolving (Fixed)	Fragment	Resolving (Scan)
Precursor Ion Scan (PC)	Resolving (Scan)	Fragment	Resolving (Fixed)
Neutral Loss Scan (NL)	Resolving (Scan)	Fragment	Resolving (Scan Offset)
Selected Reaction Monitoring mode (SRM)	Resolving (Fixed)	Fragment	Resolving (Fixed)

Enhanced Q3 Single MS (EMS)	RF-only	No frag	Trap/scan
Enhanced Product Ion (EPI)	Resolving (Fixed)	Fragment	Trap/scan
MS <sup>2</sup>	Resolving (Fixed)	Fragment	Isolation/frag trap/scan
Time delayed fragmentation (TDF)	Resolving (Fixed)	Trap/No frag	Frag/trap/scan
Enhanced Resolution Q3 Single MS (ER)	RF-only	No frag	Trap/scan
Enhanced Multiply Charged (EMC)	RF-only	No frag	Trap/scan

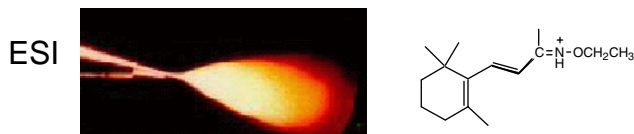
Figure 1. Schematic of QqQ (Q TRAP, AB/MDS, Sciex) and description of the various triple quadrupole and trap operation modes.

Hopfgartner et al. J. Mass Spectrom, 2004

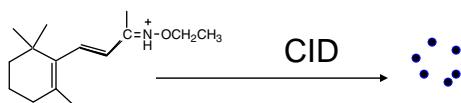
J. Prasain 01/22/2010

## Steps involved in fragmentation

**Step # 1:** Creation of ions



**Step # 2:** Add energy of activation



**Step # 3:** Charge directed fragmentation



J. Prasain 01/22/2010

## Applications of MS/MS

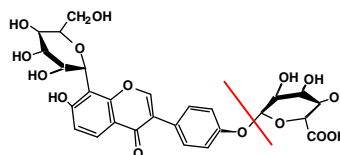
- Identification and characterization drug metabolites
- Authentication and profiling of chemical components in a crude mixture
- Substructure analysis of unknown components
- Quantification of analytes in biological samples

J. Prasain 01/22/2010

## Ways to approach predicting MS/MS

- Likely sites of protonation or deprotonation.
- Likely leaving group.
- Mobility of protons
- Literature study

Where are the sites of  
Deprotonation/protonation?  
What is the most likely leaving  
Group in this molecule?



Fragmentation always follows the basic  
rules of chemistry

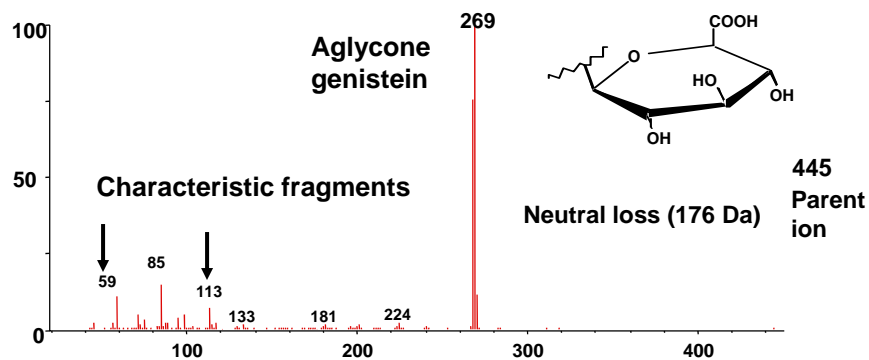
J. Prasain 01/22/2010

Ion fragmentation for identification of phase  
II drug metabolites (glucuronide/sulfate  
conjugates)

J. Prasain 01/22/2010

## What fragment ions are characteristic for glucuronide conjugates?

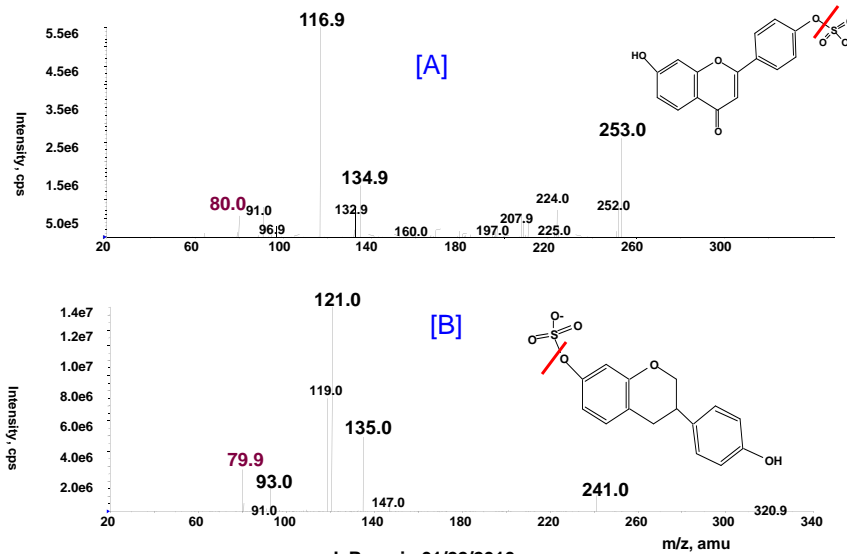
### Product ion spectrum of genistein glucuronide in ESI-MS/MS



Glucosides/glucuronides conjugates are easily cleaved off by higher potential at orifice

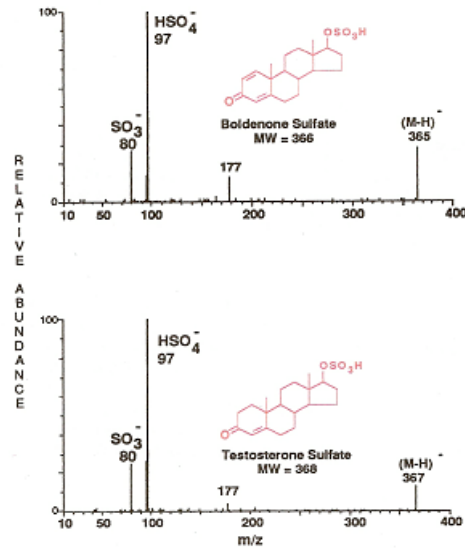
J. Prasain 01/22/2010

The loss of 80 Da from the parent ion and the presence of  $m/z$  80 in the product ion spectra are the indicative of sulfate conjugates of phenolic compounds like daidzein [A] and equol [B]



J. Prasain 01/22/2010

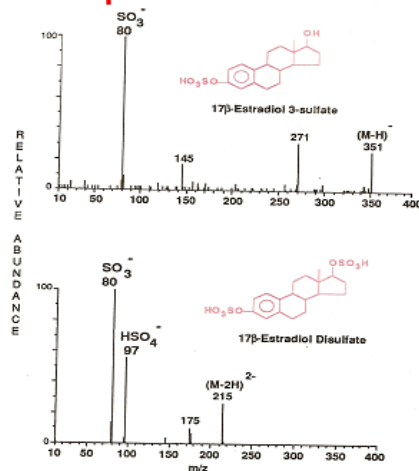
## What happens with aliphatic sulfates in MS/MS?



Aliphatic and aromatic sulfate conjugates behave differently in MS/MS aliphatic typically show  $m/z$  97 ( $\text{HSO}_4^-$ ) and  $m/z$  80 ( $\text{SO}_3^-$ )

J. Prasain 01/22/2010

## The absence of the $m/z$ 97 fragment with the base peak $m/z$ 80 makes the distinction between aromatic and aliphatic sulfates



Source: Weidolf et al. Biomed. and Environ. Mass Spec. 15, 283-289, 1988

J. Prasain 01/22/2010

**Change in mass is associated with possible metabolic reaction**

Metabolic rxn	Change in mass
Methylation	14
Demethylation	-14
Hydroxylation	16
Acetylation	42
Epoxidation	16
Desulfuration	-32
Decarboxylation	-44
Hydration	18
Dehydration	-18

J. Prasain 01/22/2010

**Characteristic fragmentation of drug conjugates by MS/MS**

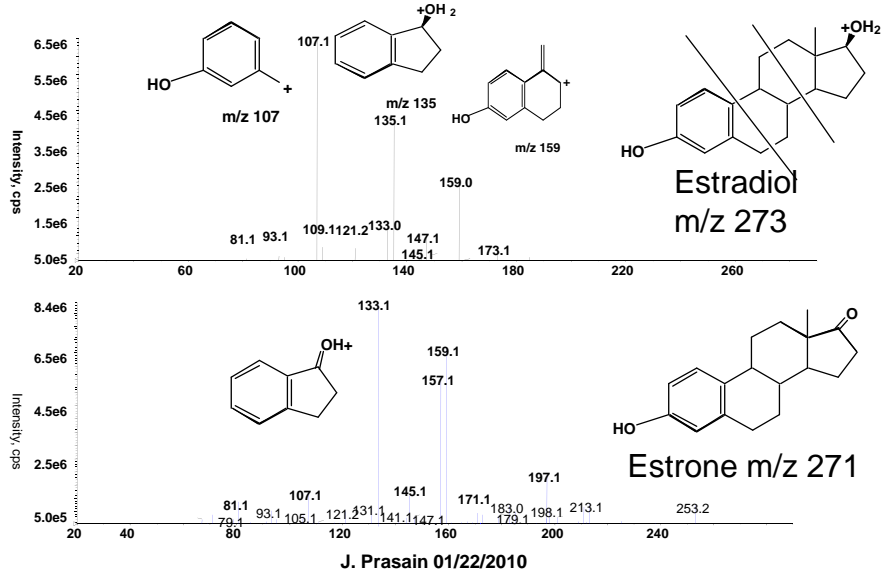
Conjugate	Ionization mode	Scan
Glucuronides	pos/neg	NL 176 amu
Hexose sugar	pos/neg	NL 162 amu
Pentose sugar	pos/neg	NL 132 amu
Phenolic sulphate	pos	NL 80 amu
Phosphate	neg	Precursor of m/z 79
Aryl-GSH	pos	NL 275 amu
Aliphatic-GSH	pos	NL 129
taurines	neg	Precursor of m/z 124
N-acetylcysteins	neg	NL 129 amu

J. Prasain 01/22/2010

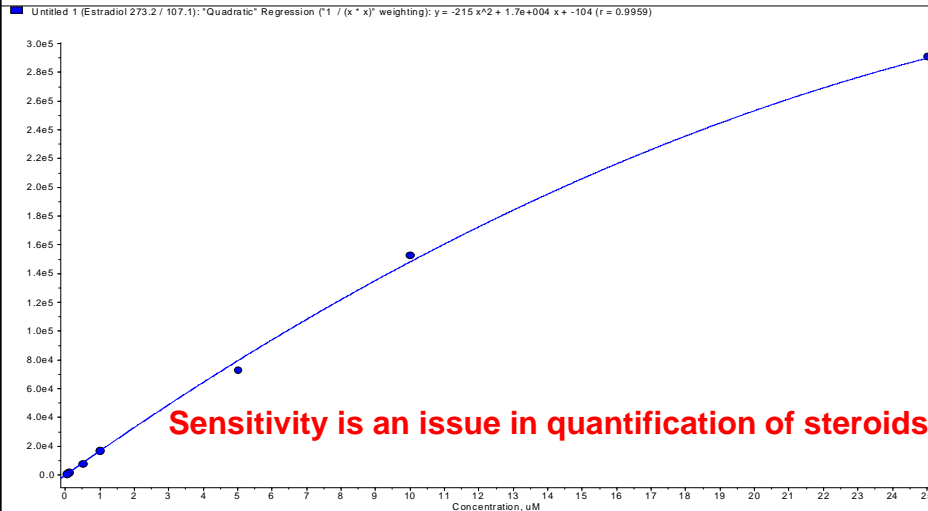
NL = neutral loss.



## How steroids get fragmented in MS/MS?

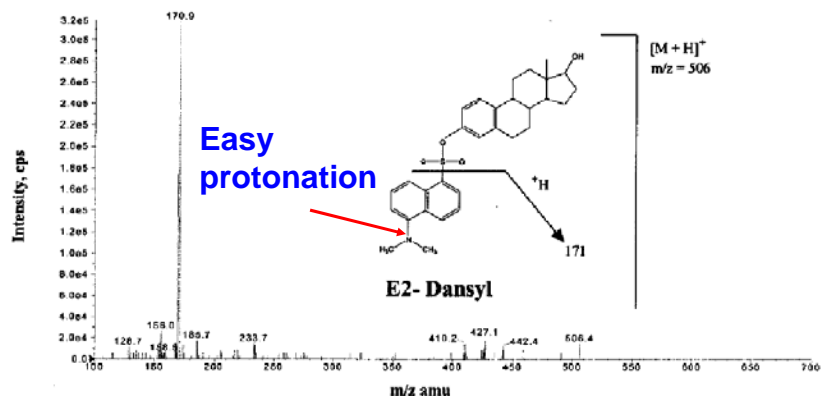


## Estradiol Standard Curve 0.05 – 25 μM r = 0.9959



J. Prasain 01/22/2010

## Derivatization of estradiol with dansyl chloride leads to the formation of E<sub>2</sub>-dansyl (m/z 506)

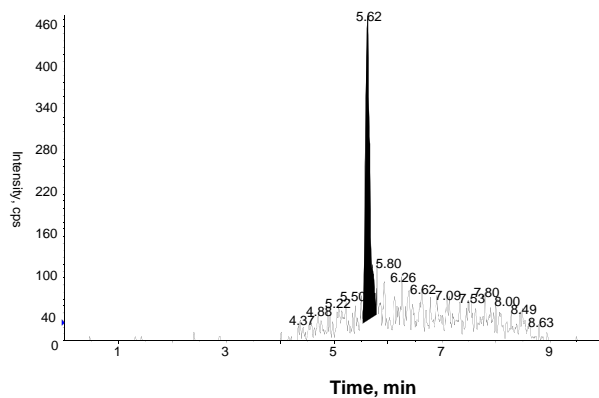


Source: Nelson et al. Clinical Chemistry, 2004

J. Prasain 01/22/2010

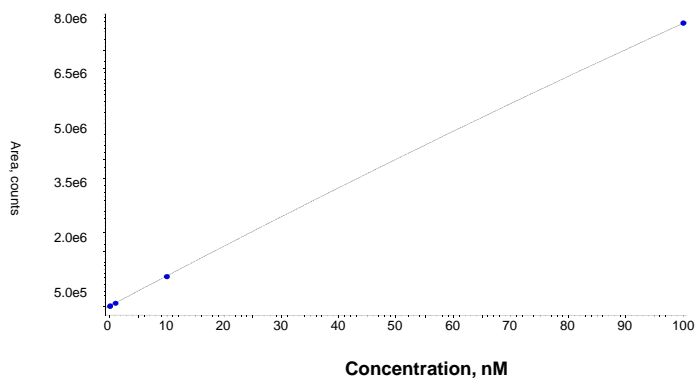
## Does derivatization help increase sensitivity?

Representative MRM chromatogram (mass transition 506/171) obtained from 50 picomole concentration of dansylated E<sub>2</sub>



J. Prasain 01/22/2010

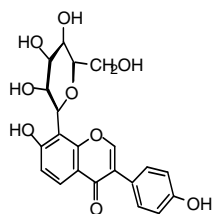
**Calibration curve for dansylated E2 showing linearity from 50 picomole to 100 nanomole concentration range (r = 0.999)**



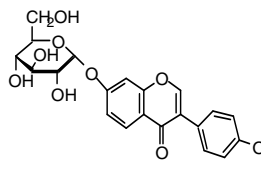
J. Prasain 01/22/2010

**Can MS/MS analysis help distinguish isoflavone glucosides?**

**The Kudzu as a source of isoflavones**



Puerarin mol. wt. 416

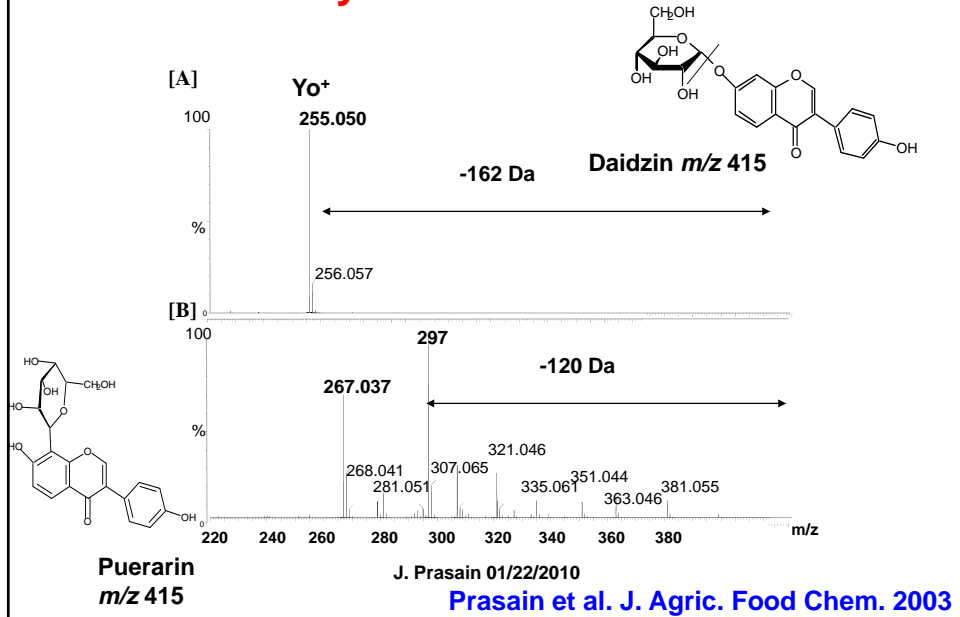


Daidzin mol. wt. 416

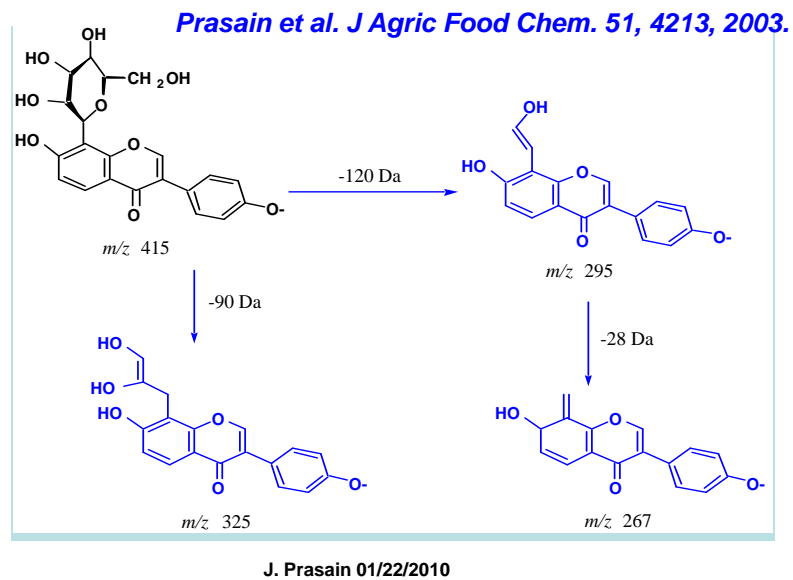


J. Prasain 01/22/2010

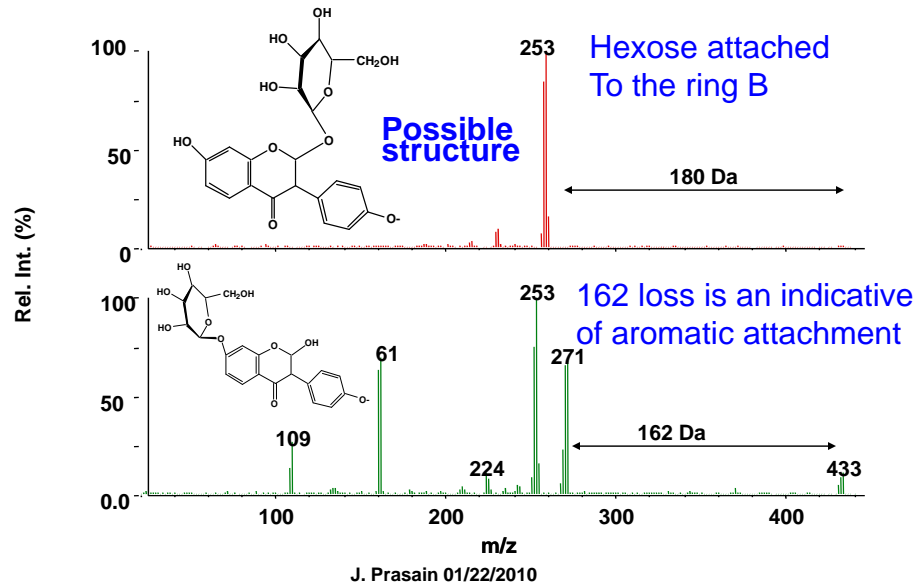
## O- and C-glucosides fragment differently in ESI-MS/MS



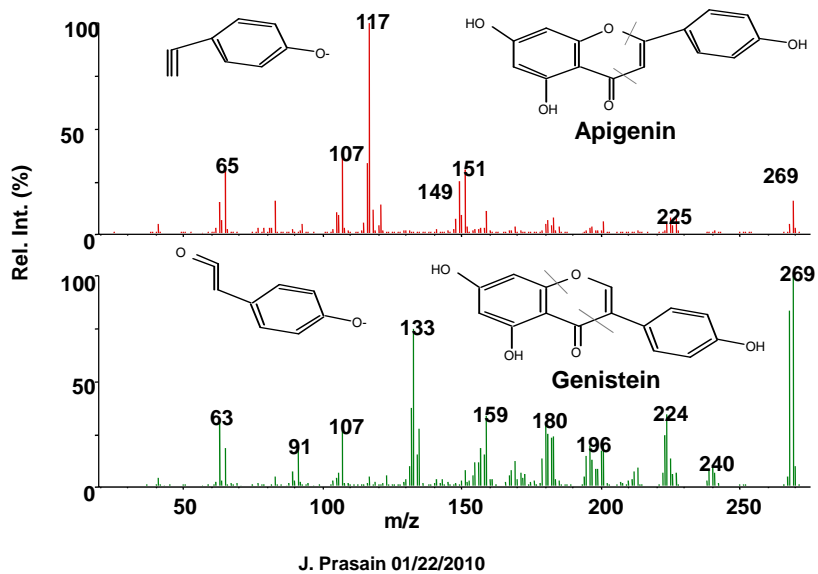
## Possible product ions of puerarin in ESI-MS/MS in negative ion mode



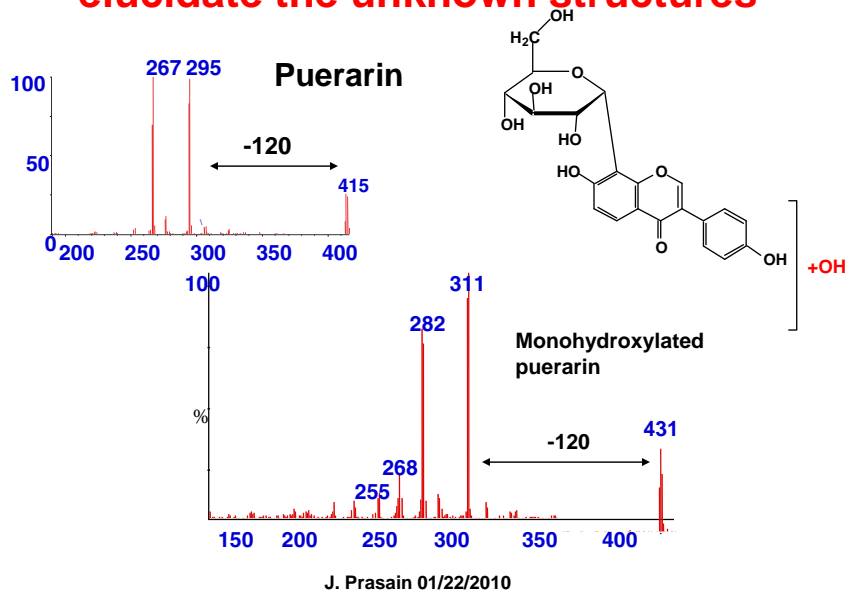
**Neutral losses (162 and 180) is useful in deciding whether sugar is attached to an aromatic ring or not**



**Isomers like genistein and apigenin are readily separated by tandem mass spectrometry**



## Comparison of product ions help elucidate the unknown structures

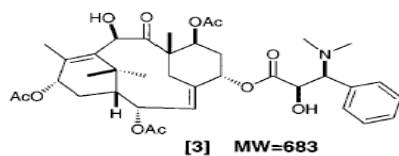
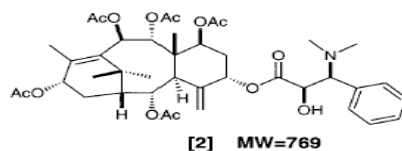
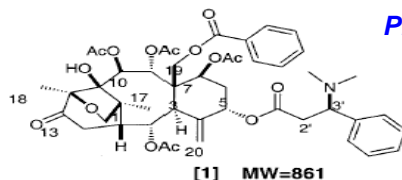


## Substructure analysis in ESI-MS/MS (dereplication and partial identification of natural products)

J. Prasain 01/22/2010

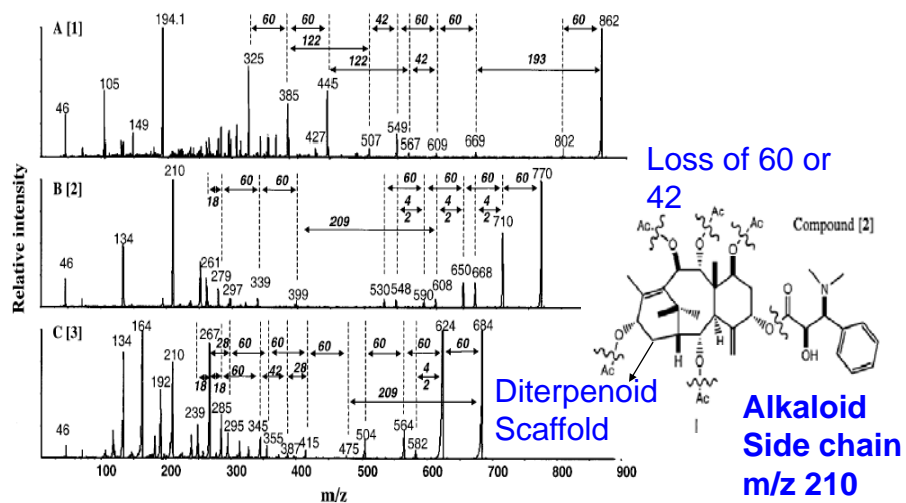
## Fragmentation of basic taxoids from *T. Wallichiana* extract

*Prasain et al. Anal Chem, 2001*



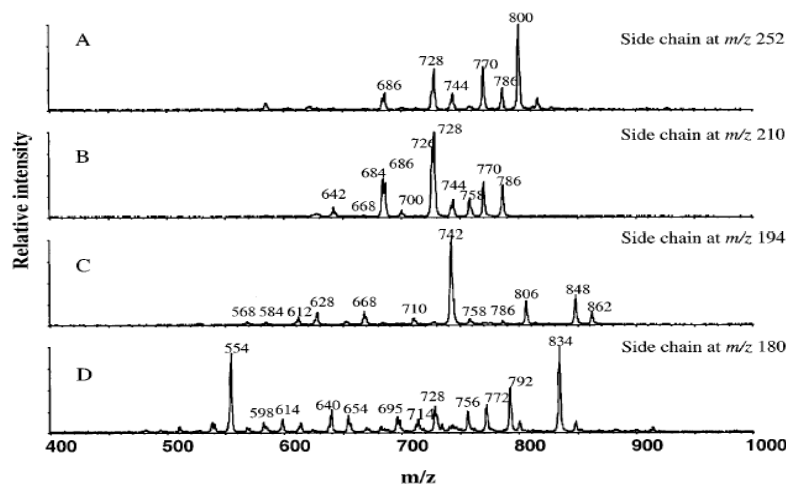
J. Prasain 01/22/2010

### ESI-MS/MS spectra of taxoids (1-3). Peaks $m/z$ 194 and 210 represent the intact alkaloid side chain.



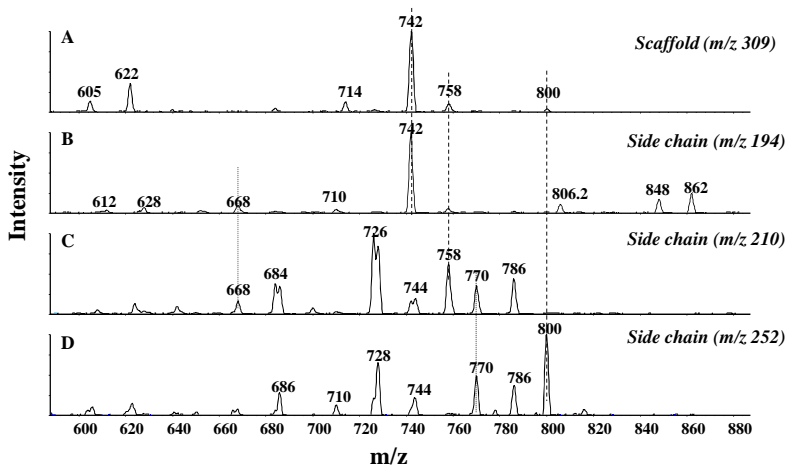
J. Prasain 01/22/2010

**MS/MS precursor-scan spectra of typical alkaloid side chains to identify the basic taxoids compounds in an ethyl acetate extract of *T. wallichiana*.**



J. Prasain 01/22/2010

**Comparison of precursor scan spectra obtained from the scaffold  $m/z$  309 and side chain  $m/z$  194, 210 and 252**



**Taxoids with scaffold  $m/z$  309 and alkaloid side chains are shown by dashed lines**

J. Prasain 01/22/2010



## References

1. **Electrospray Ionization Mass Spectrometry** by Richard B. Cole.
2. **Stefanowicz P, Prasain JK, Yeboah KF, Konishi Y. Detection and partial structure elucidation of basic taxoids from *Taxus wallichiana* by electrospray ionization tandem mass spectrometry. Anal Chem. 2001;73:3583-9.**
3. [Prasain J.K., Wang C.-C., Barnes S. Mass spectrometric analysis of flavonoids in biological samples. \*Free Radical Biology & Medicine\*, 37: 1324-1350, 2004.](#)
4. **William Griffiths. Tandem mass spectrometry in the study of fatty acids, bile acids and steroids. Mass Spectrometry Reviews, 2003;22:81-152.**

J. Prasain 01/22/2010